



## Dear Parents/Carers,

We would like to take this opportunity to welcome you and your child/ren to year 1. In year 1, we have Seahorse Class and Oyster Class. We are a team of 7 staff members. Miss Kaar and Mrs Hardy are the class teachers of Seahorses. Miss Davies is the class teacher of Oysters (with Miss Hiscocks teaching on a Wednesday). Mrs Hood, Mrs Gardner and Mrs Giles are the year group teaching assistants. We are excited about the year ahead and look forward to working in partnership with you to ensure your child is happy and progressing well.

### How the children will learn in Year 1:

The children will learn in a variety of ways in year 1 and all learning is of equal value. Some learning will be whole class with the teacher leading, some will be with a teacher either within a group or 1:1, some will be carefully selected tasks they must complete over the course of a day/week. Finally, lots will be what they independently choose to do within the provision (learning around the areas) to include learning within the following zones: writing, maths, reading, science, investigation, fine motor, construction and small world, role play, drawing, painting, crafting, play dough, mud kitchen, sand area and outdoor games.

### Timetable:

08.45-09.00 5 FTT	09.10-09.50 RWI	09.50-10.00 MINDFULNESS	10.00-10.15 WRITING INPUT	10.15-11.45 CONTINUOUS PROVISION (WGG, MD, RC, TI, Snack)	11.45-12.00 MATHS INPUT	12.00-12.10 WASH HANDS/LOO	12.10-13.10 LUNCH TIME	13.10-13.25 RWI SPEED SOUNDS _ NUMBER SENSE	13.25-13.30 MINDFULNESS	13.30-13.45 WORKSHOP INPUT/RSHE (WED)	13.45-14.45 CONTINUOUS PROVISION (WGG, MD, RC, TI)	14.45-15.15 TIDY + STORY
----------------------	--------------------	----------------------------	------------------------------	---	----------------------------	-------------------------------	---------------------------	--	----------------------------	--	--	-----------------------------

### Topics covered this year:

Topic 1 (Autumn 1)	Topic 2 (Autumn 2)	Topic 3 (Long: Spring 1 and 2)	Topic 4 (Long: Spring 1 and 2)	Topic 4 (Summer 1)	Topic 6 (Summer 2)
<i>This is Me</i>	<i>Toys Through the Years</i>	Influential People Florence Nightingale	Plymouth Local Study	Location, Location, Location!	<i>Ready, Steady... Grow</i>
We are... unique	We are... toy historians	We are... trail blazers	We are... local historians	We are... environmentalists	We are... meteorologists

### PE day:

Our PE day is on a Wednesday. Please ensure your child wears P.E kit on this day. Oysters will be taught PE by Miss Hiscocks and Seahorses will be taught by Miss Kaar or Mrs Hardy.

### Home learning:



**Reading:** Reading underpins all other areas of the curriculum and is pivotal to your child's learning. As a school, we expect children to read to an adult at least three times a week at home. This reading should be recorded on the BoomReader app.

**RWI:** Your child will bring home a familiar RWI book on a Friday, which matches their current phonic knowledge. Your child should practise reading the story multiple times throughout the week. Please discuss the text with them using the questions

inside the book. It is beneficial for them to also enjoy a range of other books at home.

**Class library books:** All children will also have the opportunity to take home a library book each week to enjoy reading for pleasure at home.

**Spelling:** After October half term, we will set Read Write Inc. spelling videos via Tapestry for your child/children to watch and participate with at home.

**Maths:** We will update tapestry with activities to support your child/children at home with their maths learning.

### How to help your child at home:

- Encourage your child to ensure they have everything they need for the day, such as their water bottle, coat and reading book bag.
- Ensure all your child's belongings are named.
- Teach your child to dress independently.
- Support them regularly with their phonics, reading, maths and spellings.
- Talk about their day with them and help promote a love for learning!

### Statutory Tests:

In Year 1, children are required to undertake a Phonics Screening Check. This usually takes place in June. We will hold a parent/carer workshop to explain what the screening entails and to give ideas of things you can do to support your child at home. This will happen nearer the time and we will contact you when we have a date.

### Tapestry:

We will be using Tapestry as a way to communicate messages, give weekly updates and share photos of the children's learning. More information will follow soon.

### Relationship Policy:

#### **READY behaviours:**

These are the READY behaviours we follow in school.

#### **Year 1 rules:**

Our 3 golden rules within year 1 are:

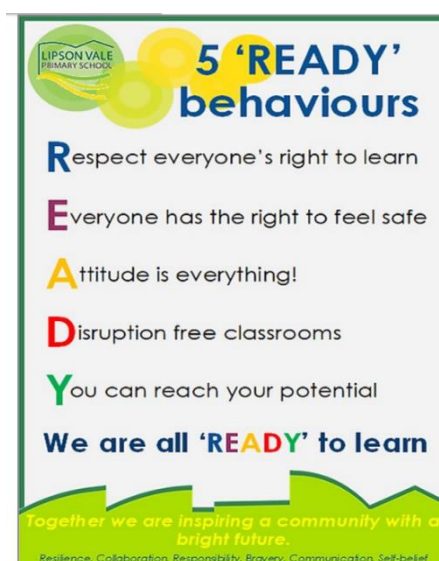
1. Be safe.
2. Be kind.
3. Be respectful.

#### **Other things you need to know:**

A polite reminder that due to allergies we are a

**NUT FREE SCHOOL!**

Please be aware of this if you are providing your child/children with a home packed lunch and snack or if you are bringing in any treats to celebrate birthdays.



Bernice Terrace, Plymouth, Devon, PL4 7HW

01752 224801

lipson.vale.primary.school@plymouth.gov.uk

www.lvps.co.uk

@LipsonValePS



Lipson Vale Primary



We kindly ask that toys from home do not come into school. It would be a huge shame for your child/children to lose their toys or for them to become accidentally broken at school.

We will inform you later in the term about arrangements for the KS1 nativity performance.

Each week, a 'Seahorse/Oyster of the week' certificate will be presented in assembly to one child from each class, celebrating their achievements. They will also then get to take the class teddy home for the week along with a scrap book to record any adventures! One child from each class will also receive a 'reader of the week' award. This celebrates a commitment to reading at home and their reading attitude and progress within school.

Parents and carers are invited into class on Thursday 26<sup>th</sup> September, Thursday 11<sup>th</sup> October and Thursday 25<sup>th</sup> October 2024 from 3pm to choose a book with their child to take home and borrow.

Our doors are always open so please speak to any of the team if you need any further support/ information. We know that by working together in partnership, we can best support your child's learning and development.

**Date for drop-in: Wednesday 18<sup>th</sup> September 2024 3:30pm**

**Take care and please do talk to us if you have any concerns, queries or questions.**

**The year 1 team**

